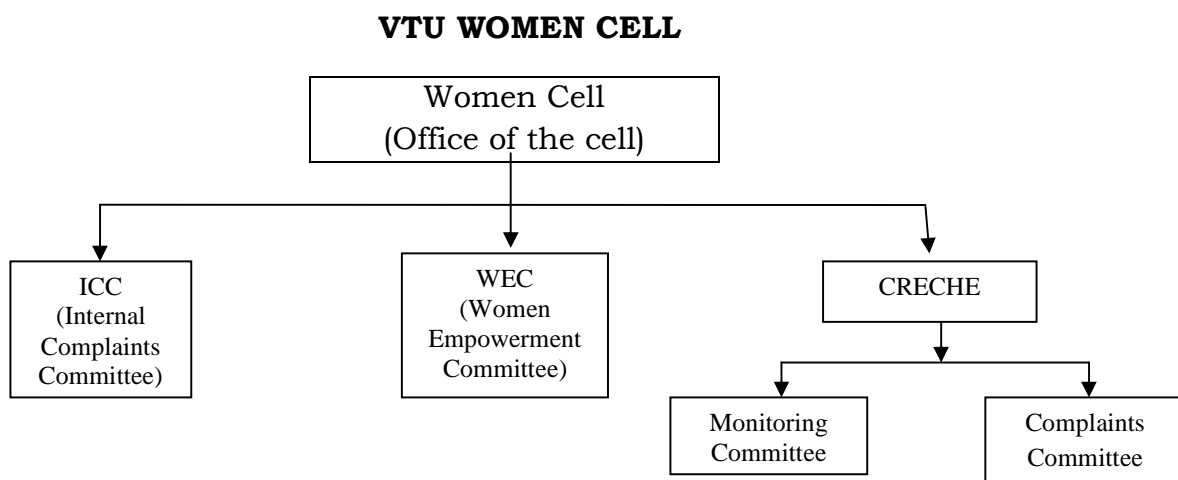


STRUCTURE OF THE WOMEN CELL



Sl No.	Committees			
	ICC(As per UGC regulations 2015)	WEC	CRECHE	
			Monitoring Committee	Complaints Committee
1	Presiding Officer	Chairperson	Chairperson	
2	Two faculty members and two non-teaching employees	Five Members	Four Parents	
3	Three students	One Member Secretary	Crèche Supervisor	
4	One member amongst non-government organization.		Crèche worker	

Objectives of the women cell:

- To bring gender equality in the university in all areas
- Elimination of Violence and discriminatory practices against women in the University
- To take proactive measures to make workplace of the women safe
- To mentor and provide role models to young students to attract them and do well in the careers in science and technology.
- To help the women employees to achieve their full potential in their profession.
- To conduct outreach programmes for socio economic development of rural woman.
- To prepare a road map for implementation to encourage women employees and students to make them achievers.
- To open child care centers for employees, research scholars and students of the University
- Preparing annual report including institutional gender audit